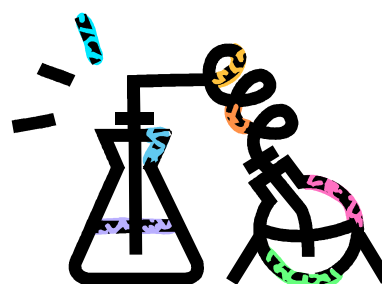


# SCIENCE



## Pathway: A

## Qualification: AQA Entry Level Science: Single Award and Double Award

### Course outline:

The Entry Level Certificates in science are designed for students who may not achieve a grade 1 at GCSE. Three levels of award are available – Entry 1, Entry 2 and Entry 3, with Entry 3 being the most demanding.

The award integrates the principles of 'How Science Works' throughout the six components.

Component 1: Biology—The Human Body.

Component 2: Biology—Environment, Evolution and Inheritance.

Component 3: Chemistry—Elements, Mixtures and Compounds.

Component 4: Chemistry—Chemistry in Our World

Component 5: Physics—Energy, Forces and Structure of Matter.

Component 6: Physics—Electricity, Magnetism and Waves.

The component-based structure of the ELC gives the student a sense of achievement throughout the course and enables their progress to be monitored. This qualification covers the KS4 programme of study, and links closely to the new GCSEs

### Assessment:

The ELC science course is assessed with a short written test (ESA) at the end of each unit marked by the class teacher. Each unit also has a practical piece of coursework (TDA) These are designed and marked by the class teacher.

# SCIENCE

**Pathway: A + B Qualification:**

**AQA Entry Level Science: Single Award.**

**Open Awards— Level 1 Award and certificate in Science.**

**Course outline:**

All pupils in Year 10 and Year 11 study science. Each year group is grouped according to their ability. Each ability group completes a course that is matched to their ability.

The Open Awards Level 1 qualification will be delivered alongside the ELC for science.

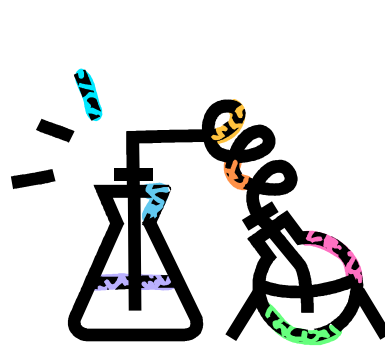
Units for Level 1 include;

- The human body.
- Healthy Lifestyle
- Acids and alkalis
- Elements and compounds
- Using magnets and electricity
- Forces in action
- Science investigation skills.

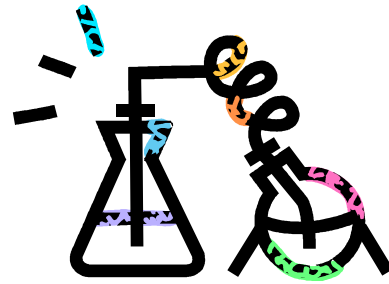
## **Assessment**

The ELC science course is assessed with a short written test (ESA) at the end of each unit marked by the class teacher. Each unit also has a practical piece of coursework (TDA) These are designed and marked by the class teacher.

The level 1 is assessed using a portfolio of evidence. This will include a combination of both written work and evidence of practical application.



# SCIENCE



## Pathway: c

### Qualification: Vocational studies award (entry 3).

#### Course outline:

Qualification: Vocational studies award (entry 3). Which is completed together with ITC to build up the Award. Units will be chosen each year based on the cohorts needs and interests in science after an initial assessment..

Students complete 2 sector units and 1 personal skills unit. 1 sector unit from science and 1 sector unit from IT. The additional unit in personal skills is taught within science lessons.

#### Units for science include;

Optional units

- Testing the Quality of Products.
- Carrying out a Scientific Experiment.
- Investigating Variations in Plants and Animals.
- Measuring Waves Used in Technology.
- Practical Actions to Protect the Environment.
- Making a Chemical Product.
- Testing the Properties of Products.
- Investigating Crime Scene Evidence .

#### Assessment:

All units in these qualifications are internally assessed with assignments and pupils will put together a portfolio of work that shows they have met the assignment briefs for the units they have completed.