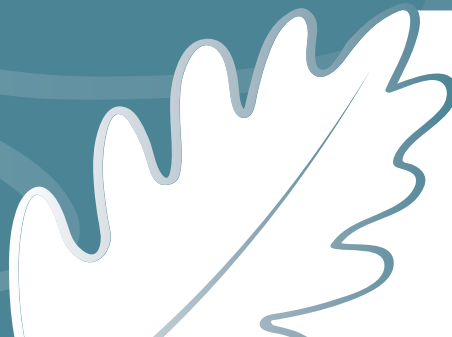


Newsletter

Autumn/Winter 2022



Hello and welcome to the second edition of our Oak Learning Partnership newsletter.

I'm now one full term into my second year as CEO. So much has happened over that time, and like so many things in life, in one respect it feels like it's been a few weeks and in others an awful lot longer because so much has taken place. I feel privileged to contribute to running our schools, and I'm very proud of the staff, pupils and communities we work with.

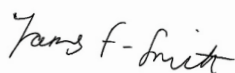
Our schools continue to improve and develop so they can provide the best education for our pupils. Being in a trust provides a stronger support network for schools, and I believe we have put effective systems and central resources in place that really support our schools to be the best they can be. This includes some joint educational projects, expert advice around all the business aspects and significant investment in buildings and resources, some of which you can see a flavour of in this newsletter. We are determined that all our pupils have access to the best possible resources to reach their potential, and we will continue to invest in buildings and resources.

At the beginning of the year, we held our first face-to-face training event for all staff across our schools. It was amazing to have everyone in one place, and whilst we will always protect the individuality of our schools, there was a strong sense of the power of being part of a larger collaborative organisation. This event gave us the opportunity to explore what our common vision is as a group of schools working together and what **'inclusion at the heart of our trust'** means to us. There's an article later that outlines our vision; this vision will be critical as we grow and develop as a community.

We have been given the green light by the Department for Education (DfE) to grow as a trust and welcome new schools to join us. We are not in a rush to grow and will ensure any school joining us fits culturally and brings joint benefits. Whilst there will always be things we know we need to be better at, we know we have a lot to offer new partners. We also know that growing will allow us to offer our pupils, staff and communities more opportunities than we can as a smaller organisation. One thing for certain is that we will never overstretch ourselves and compromise the quality in our current schools.

I know that this time of year can be difficult for some of our families, which is being exasperated by the cost-of-living crisis, which many will be feeling the pinch of. With this in mind, we've included some key links to support our families on our website <https://www.oaklp.co.uk/key-information/cost-of-living-guide/>, and as a trust, we are always developing ways to support our community.

I hope this newsletter gives you an insight into our trust and how we work to support the work of our schools. All that leaves me to do is wish you a very happy Christmas.



James Franklin-Smith
Chief Executive Officer (CEO)



Our Vision

Over the last twelve months, we have been shaping our vision as a trust taking on board views from all stakeholders. As we develop and grow as a trust, this will become really important; we feel the following represent who we are and what we want to stay true to.

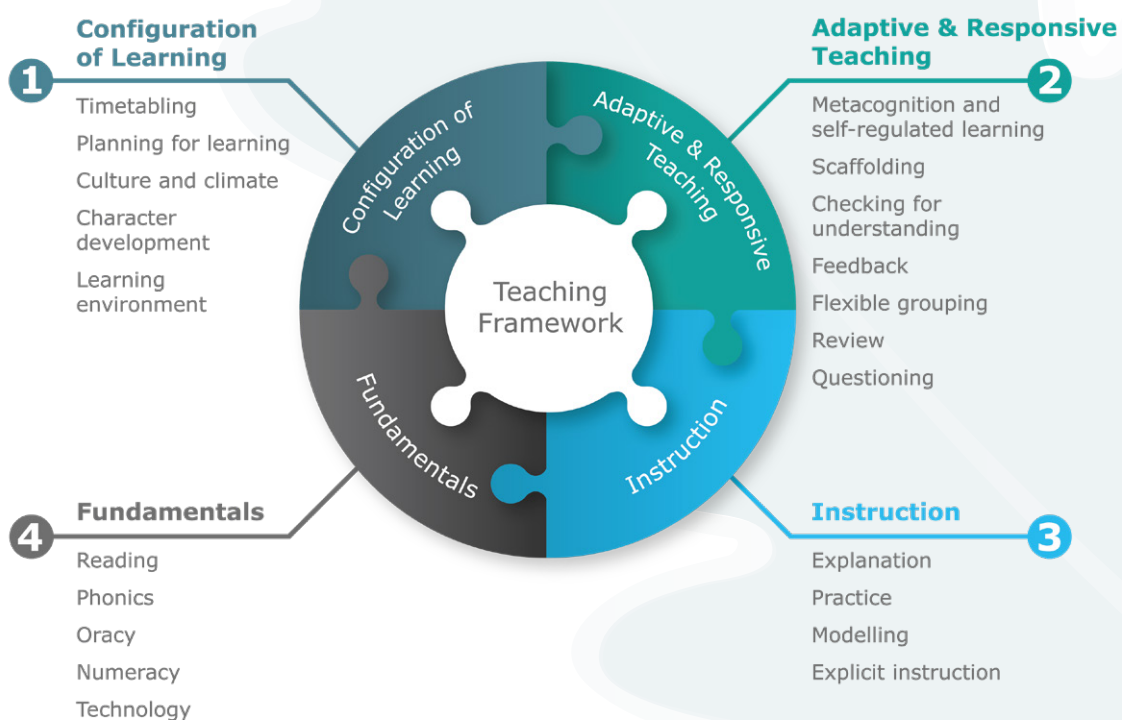
To transform lives through a highly inclusive educational approach. Inclusion is at the heart of our trust.

- We are compassionately rigorous; we care deeply about our community, which is why we push everyone to reach their full potential even if this feels difficult.
- We have unconditional positive regard; we treat everyone with respect, dignity and warmth regardless of the circumstance or challenge.
- We leave no one behind; we count in ones and focus on individual needs whilst ensuring everyone can thrive.
- Everyone is welcome; we actively embrace diversity and are relentless in how we teach our stakeholders the importance of this.

School Improvement

We are now in our third year as a partnership of schools, and as such, we've really started to see the benefits of learning from each other.

The main focus for our school improvement work this year is the development of our Oak Learning Partnership Teaching Framework. Following the work we did last year on creating a set of shared curriculum principles and designing our curriculum offer to pupils, we have now started to collaborate on **how** we deliver an ambitious curriculum in each of our schools – this is our Teaching Framework.



This framework considers the best of what's out there in terms of current research into teaching and learning and the expertise we have within our trust in terms of primary, secondary and specialist approaches. It has been a real privilege to see not only the commitment of our staff to their own school but also the development of the other schools in our trust. By coming together to create some broad approaches to teaching, we are aiming for consistency for all our pupils while also encouraging each school to maintain its identity.

Christine Reynolds
Director of School Improvement

Investment in our Schools

Much work has been carried out in our schools during the summer holidays, and we are continuing to invest in our learning environments.



Elms Bank
School & College



Elms Bank's multisensory room with light, sound and touch stimuli is providing lots of fun for the pupils. The final plans for the new polytunnel for growing fruit and vegetables have been approved, so work will commence soon. The new roofing and CCTV installations are now complete. The trust is now looking to improve the school gates with magnetic locks which will link to the fire alarm, making it safer for pupils along with improvements to the Calm Areas.



Hazelwood
High School



D&T Room After

Hazelwood High

School toilet facilities have now been modernised, and the Design and Technology classroom is now bigger and brighter to accommodate pupils with their projects. Work is beginning on the schools' flat roofs, the creation of a new classroom for Art, completing work on the library and installing a second pathway to access the AstroTurf. A new waiting area at the front of the school is being built so that the students can gather safely away from the road both in the morning and after school. All these changes mean that school remains a safe and productive environment for the students.



D&T Room Before



Unsworth
Primary School



Unsworth Primary

School has had many of the communal spaces redecorated, such as the corridors and toilets. The Reception/Year 1 outdoor area has been improved considerably, and it is lovely to see our youngest pupils riding their balance bikes around the newly laid AstroTurf. Year 4 pupils are loving their new iPads and making the most use of the range of apps to support them with their learning. The trust has now fully committed to refurbishing the Reception/Year 1 classroom to incorporate a changing/toilet facility, which will take place during the Christmas holidays.

Splash of Colour!

The Central Team have been in their new offices for almost a term, and whilst we love our new space, we feel that perhaps we are missing some of the lively inspiration and imagination which is clear to see in our all schools. Our art teachers from across the trust are helping us out by launching a competition for all our pupils, who are being invited to produce a piece of art which reflects the theme **'inclusion is at the heart of our trust'**.

The winning entries will be proudly displayed in the Central Team offices, and the winning artists will be invited for hot chocolate and treats in James's office. We are all really looking forward to seeing the competition entries, and we hope to share photos of the artwork in our next newsletter.

News

Our wonderful schools have had a very busy term. The following gives us a flavour of what has been happening in our schools.

We hope you enjoy reading about our brilliant and unique schools.



Elms Bank School & College

We have had a busy start to the new term, in which we welcomed our new Year 7 and our Y11 progressed to college. They are settling in well and enjoying school and college life. September saw the start of our new staff journey at Elms Bank.

Here's what some of our children have been doing this term.

Orienne Langley-Sadler
Headteacher

Trick or Treat

Halloween started this half term with both staff and pupils getting into the 'spirit' of things with fancy dress. Trick-or-Treat stations at various offices were decorated, and our children had practised an array of songs, dances and jokes to win their sweet prizes. It was a fun start to autumn and got us ready for the hard work ahead.



Moving-On Event

The Moving-On Event was held at the Hub for pupils and parents, which again was a successful event.

Our pupils enjoyed learning about their next journey after school, and many have got firmer plans of what they want to do when they eventually leave us, following advice from local colleges, support services and community services that attended to share information about what was available in the local area.

Our internship goes from strength to strength with some of our pupils securing work placements or paid employment. We are exceptionally proud of each and every one of them – they really have positively changed their lives!



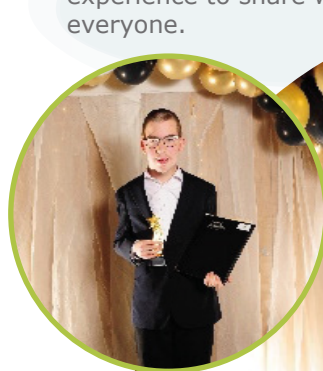
Bury SEND Event

In October, we were invited to have a stall to showcase Elms Bank at the Bury SEND day. We were joined by many parents, families and Bury residents who praised us for our beautiful singing, enthusiasm and professionalism.



Awards Evening

The Annual Awards Evening was held face-to-face this year at Elms Bank College. Our students shone, and their achievements were celebrated with staff, parents, Trustees and QEB Members in attendance. The Awards Evening means so much and is the culmination of much aspiration, resilience and integrity from all our students, and it was a wonderful experience to share with everyone.





Hazel Wood High School



BeeWell Festival

Several of our students were given the opportunity to attend the BeWell Festival at the Mayfield Depot in Manchester.

They even allowed students to explore different ways of maintaining good mental health and well-being through workshops, exploring stalls, listening to presentations, and it was designed to listen to young people's voices, bring pupils together to act for change and celebrate young people's well-being.

Headteacher's Breakfast

We have introduced a Headteacher's Breakfast for this academic year as a way to highlight the achievements of our students.

Students are selected for the weekly breakfast, which takes place on a Friday, by members of our teaching staff to celebrate their achievements in school, giving them the opportunity to share their views with the Headteacher regarding their experiences of learning at Hazel Wood.



We have enjoyed an excellent start to the school year at Hazel Wood, and our staff have continued to work tirelessly to ensure that our students receive the best education possible for them to reach their academic potential.

We have celebrated the best results this school has seen in a long while. Based on the current validated DfE data, the school is now ranked the 5th best in Bury, previously 14th, and is therefore the most improved school in the Local Authority and potentially even wider! This is a huge achievement showing the rewards of our hard work, and it feels so good to know that our students are going on the right future path and that we have a school we can be immensely proud of.

Here's what some of our children have been doing this term

Paul Greenhalgh
Headteacher

Hazel Wood celebrated in the *Bury Times* for fantastic achievement!

Hazel Wood High School have a great deal to celebrate with the end of Key Stage 4 results now in. Hazel Woods' 'Progress 8' figure, which measures how much progress pupils have made over eight subjects, shows outstanding improvement.

Hazel Wood Head Teacher Paul Greenhalgh said, *'I am extremely proud of all the hard work that staff and students have done to achieve these phenomenal results'*.

And the CEO of Oak LP Mr James Franklin-Smith added, *'The school has shown a steep trajectory of improvement. As CEO I'm very proud of Paul, our staff and our students'*.

Take a look at the full article in the *Bury Times* [here!](#)



On 19 October 2022, Bury's Mayor, Councillor Shaheena Haroon, visited the school.

We thank the Mayoress and her colleagues for their time and also our students, who intently conversed about Bury's problems and solutions in topics such as Knife Crime, Cleanliness, Homeless People, Language Barriers, Diversity and Transportation to name a few.





Unsworth Primary School



#HelloYellow

We supported #HelloYellow Day in October. Children came to school wearing something yellow alongside their uniform, such as yellow coats, T-shirts or a yellow hair bobble and donated. We raised £122 for Young Minds, which is a charity for young people's mental health.

Football

Congratulations to the Unsworth boys' football team, who won their cup game in torrential conditions, 6-5, to advance to the next round. Also well done to the Unsworth girls' football team, showing improvements in their recent match against a very talented King David team.



September saw the start of a new school year with lots of great events to look forward to. As always, it is a very busy time, and staff have worked incredibly hard to ensure pupils are settled and make the best possible start to the school year.

Our main focus over the last term has been to set clear behaviour expectations for our pupils and embed these further through the consistent routines we have defined. This has had a positive impact on our pupils, who have responded to the changes, and a calm, purposeful atmosphere can be seen and felt across the school. Over the coming weeks, we will continue to build on this positive vibe and strengthen our approach to meet the needs of all our pupils in a happy and safe learning environment.

Here's what some of our children have been doing this term.

Tahseen Ali
Head of School

Robinwood

Year 6 children went on a residential for two days in September at Robinwood Activity Centre. Examples of activities are wall climbing, archery, canoeing, raft building, night line, problem-solving, crate challenge and trapeze.



Gardening

On Saturday afternoon, 15 October, we were on a mission to improve our outdoor spaces and asked parents, carers and children to help us to clear the overgrown planters and areas in the playground.

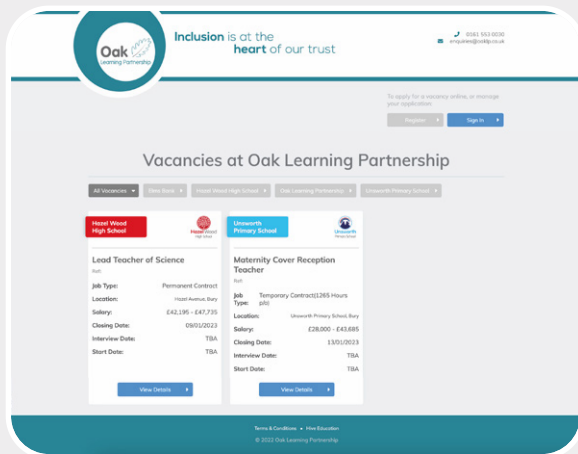
The PTA kindly provided refreshments. Once the areas were clear, we plan to start a gardening club so that our children can enjoy planting and maintaining the areas.

Keep up to date

To keep up to date with everything that takes place within our trust you can follow us on Twitter and Facebook.

Click on Welcome to Oak Learning Partnership (oaklp.co.uk) and choose your school.

As a trust, we are always looking for enthusiastic, hardworking individuals to join our team. Please visit our Vacancies page (Vacancies at Oak Learning Partnership (oaklp.co.uk)) to apply for the latest vacancies within each of our schools.



We would like to thank all our trust staff and parents for their support over this Autumn Winter Term and wish you all a fantastic break. See you again in January 2023.



Our Schools

The Oak Learning Partnership is a Multi Academy Trust comprising of Unsworth Primary School, Elms Bank and Hazel Wood High School. Unsworth Primary School is a 'Family' school with the motto 'Together We Build Understanding'. The five chosen values of happiness, honesty, friendship, respect and learning are at the heart of developing children's social and academic understanding and ensuring that they enjoy making progress together. Elms Bank is a generic secondary special school for pupils aged between 11 and 19 years old. Elms Bank works in partnership with many other agencies to ensure that the special needs of each pupil are met so that they can grow in confidence, health, safety and academically. Hazel Wood High School is driven by the core values of Pride, Respect and Aspiration. Pupils are members of a very inclusive school community which offers them the opportunity and encouragement to aim high and excel.

To learn more about the schools in our Multi Academy Trust, please follow the links below.

Our Schools



Unsworth Primary School
[Find Out More](#)



Hazel Wood High School
[Find Out More](#)



Elms Bank
[Find Out More](#)

