

# Labour Market Information

\*LMI obtained from the Office for National Statistics and Gov.uk. Last updated January 2020



## Greater Manchester LEP

Wigan, Bolton, Bury, Salford, Rochdale, Oldham, Tameside, Trafford, Manchester & Stockport

### Employment



UK - 76.3%  
LEP - 76.2%

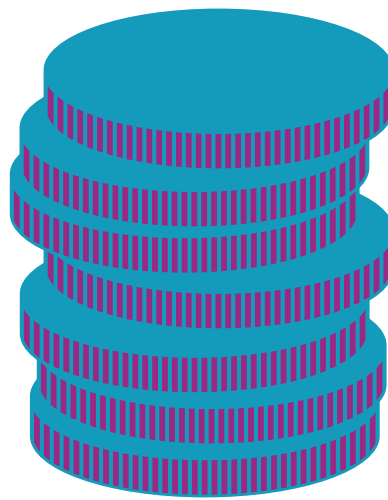
16-64 year old population = 1,790,400  
Total population = 2,812,600

### Unemployment



UK - 3.8%  
LEP - 4.8%

### Salary



UK Average - £30,414  
LEP Average - £28,402

### Self-Employment



183,000 people in the region are self-employed

### Growth Sectors

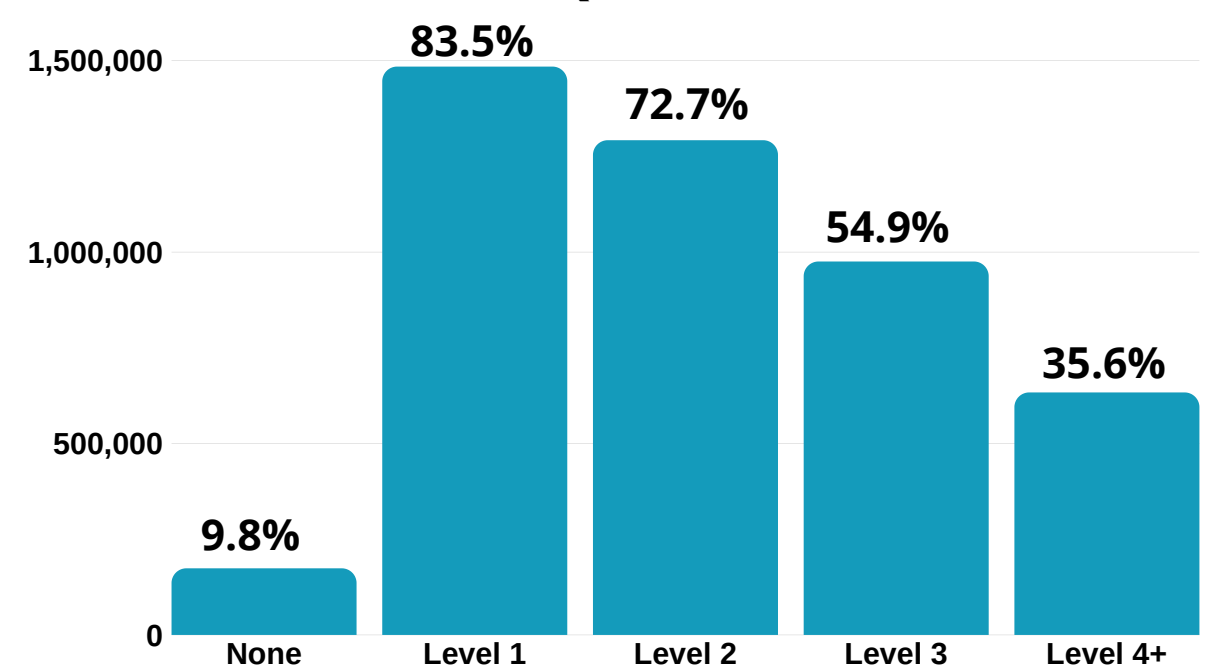
- I.T and Cyber Security
- Health and Social Care
- Energy
- Professional Services
- Industrial biotechnology

There are many other sectors that will grow in your region



### Qualification levels

1,291,600 people have at least a level 2 qualification such as GCSEs or an NVQ.



### Where do people work right now?

#### Most jobs

- Wholesale & Retail - 224,000 (16.8%)
- Health & Social Care - 159,000 (11.9%)
- Administration - 142,000 (10.7%)
- Science & Technology - 121,000 (9.1%)
- Education - 114,000 (8.6%)

#### Fewest jobs

- Arts & Entertainment - 29,000 (2.2%)
- Real Estate - 23,000 (1.7%)
- Electricity, Gas & Air - 12,000 (0.9%)
- Water, Sewerage & Waste - 7,000 (0.5%)
- Mining, Quarrying & Utilities - 350 (0.02%)

#### Did you know...

The NHS is the UK's biggest employer, and the 5th biggest employer in the world!

### What are some of the region's big name companies to work for?



Need careers advice? Call us on 0800 100 900, contact us online, or find us on Facebook, Twitter and The Student Room.